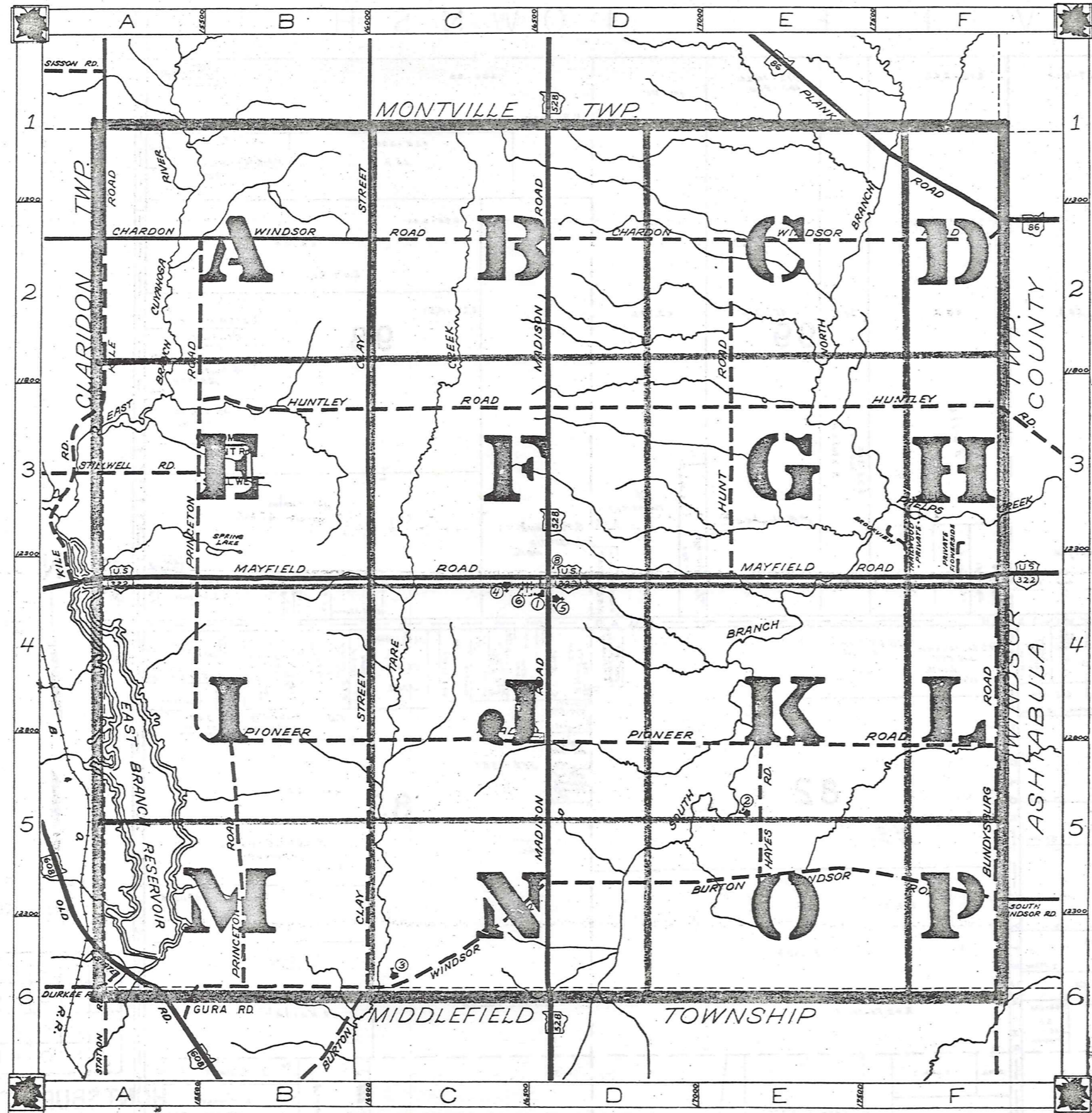


ROAD INDEX



A	J	S	STILLWELL RD. A3
B	K	T	TRAILWOOD RD. F4
BROOKVIEW RD. F3	KILE RD. A1-A4		
BUNDYSBURG RD. F4-F6			
BURTON WINDSOR RD. C6-F5			
C	L	U	
CHARDON WINDSOR RD. A2-F2			
CLAY STREET B1-B6			
	M	V	
	MADISON RD. D1-D6		
	MAYFIELD RD. A4-F4		
D		W	WINDMILL POINT RD. B3
DURKEE RD. A6-B6			
	N	X	
		OLD STATE RD. A6	
E		Y	
F		Z	
FLOWERSIDE RD. F4			
	P		
	PIONEER RD. B5-F5		
	PLANK RD. E1-F2		
	PRINCETON RD. B2-B6		
G			
H	Q		
HAYES RD. E5			
HUNTLEY RD. B3-F3			
HUNT RD. E2-E4			
I	R		
J			
K			
L			
M			
N			
O			
P			

HUNTSBURG TOWNSHIP

SCALE: 1" = 2000'

G.J. ROBINSON
GEAUGA COUNTY ENGINEER

--- UNPAVED ROADS
--- TOWNSHIP LINE
--- PAVED ROADS
--- COUNTY LINE

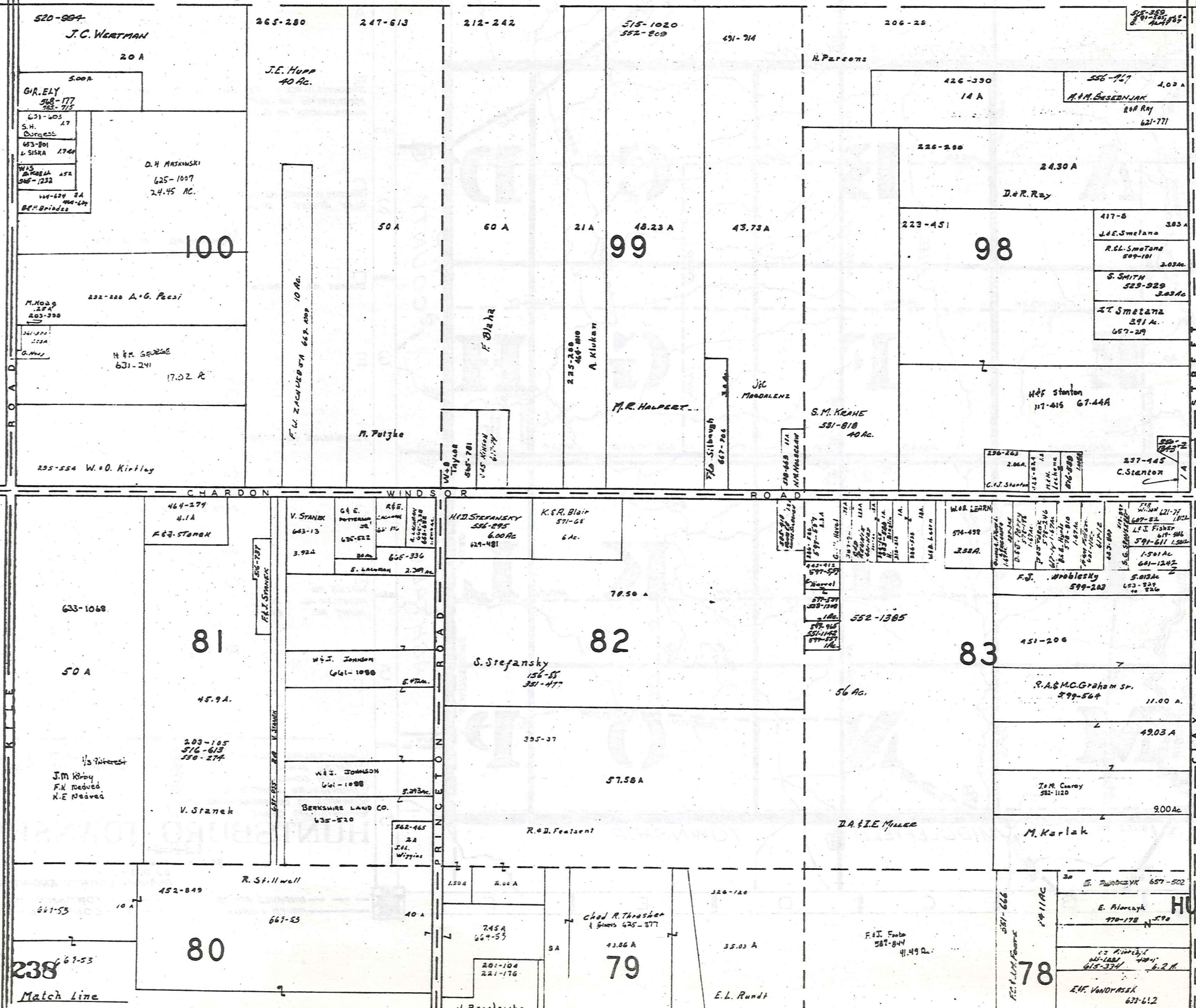
- ① HUNTSBURG ELEM. SCHOOL
- ② AMISH SCHOOL
- ③ AMISH SCHOOL
- ④ HUNTSBURG BAPTIST CH.
- ⑤ HUNTSBURG CONGREGATIONAL CH.
- ⑥ HUNTSBURG CEMETERY
- ⑦ HUNTSBURG CEMETERY
- ⑧ UNITED STATES POST OFFICE
- ⑨
- ⑩



MONTVILLE TOWNSHIP

TOWNSHIP

CLARIDON



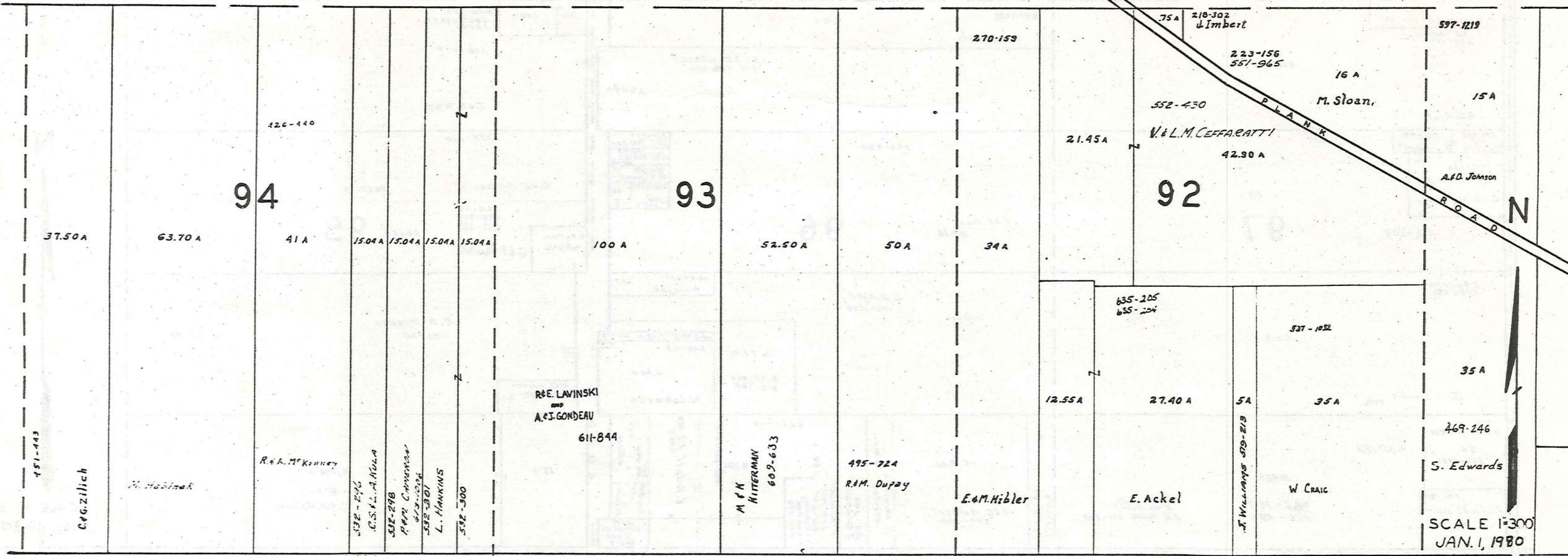
SCALE 1 300
JAN. 1980

A	B	C	D
E	F	G	H
I	J	K	L
M	N	O	P

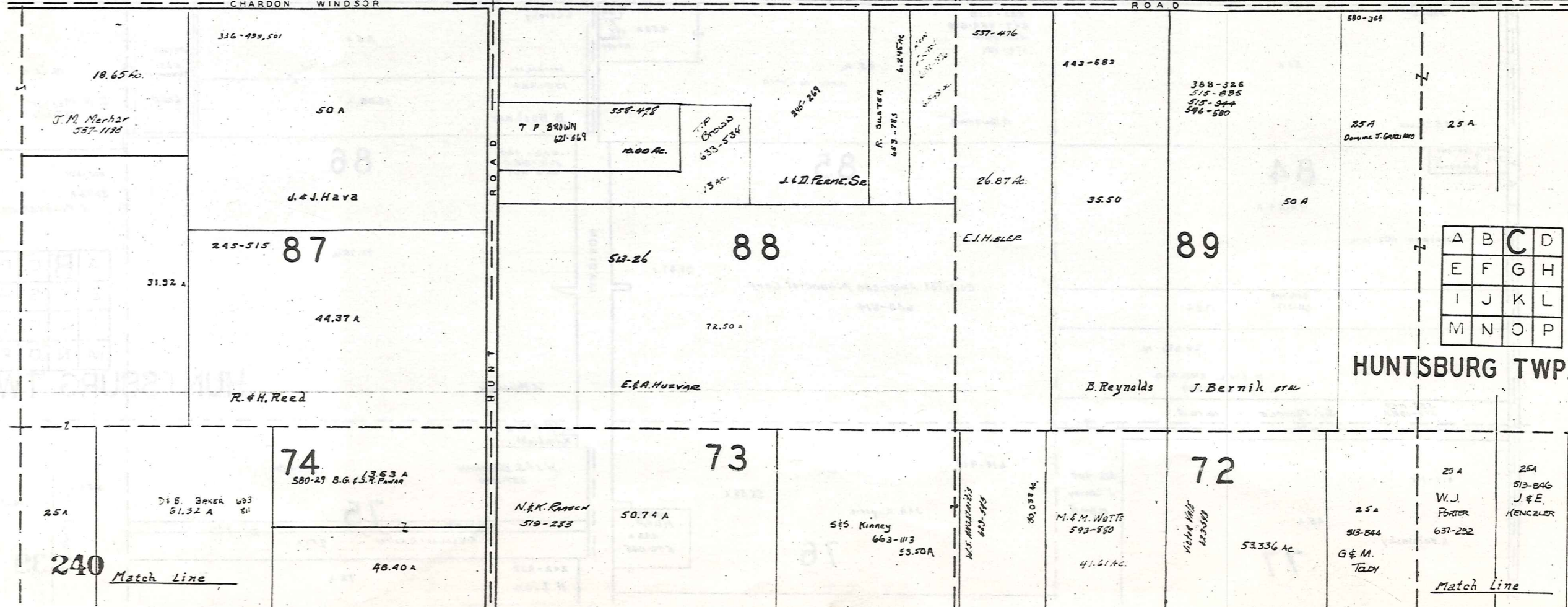
HUNTSBURG TWP

Match Line

MONTVILLE TOWNSHIP



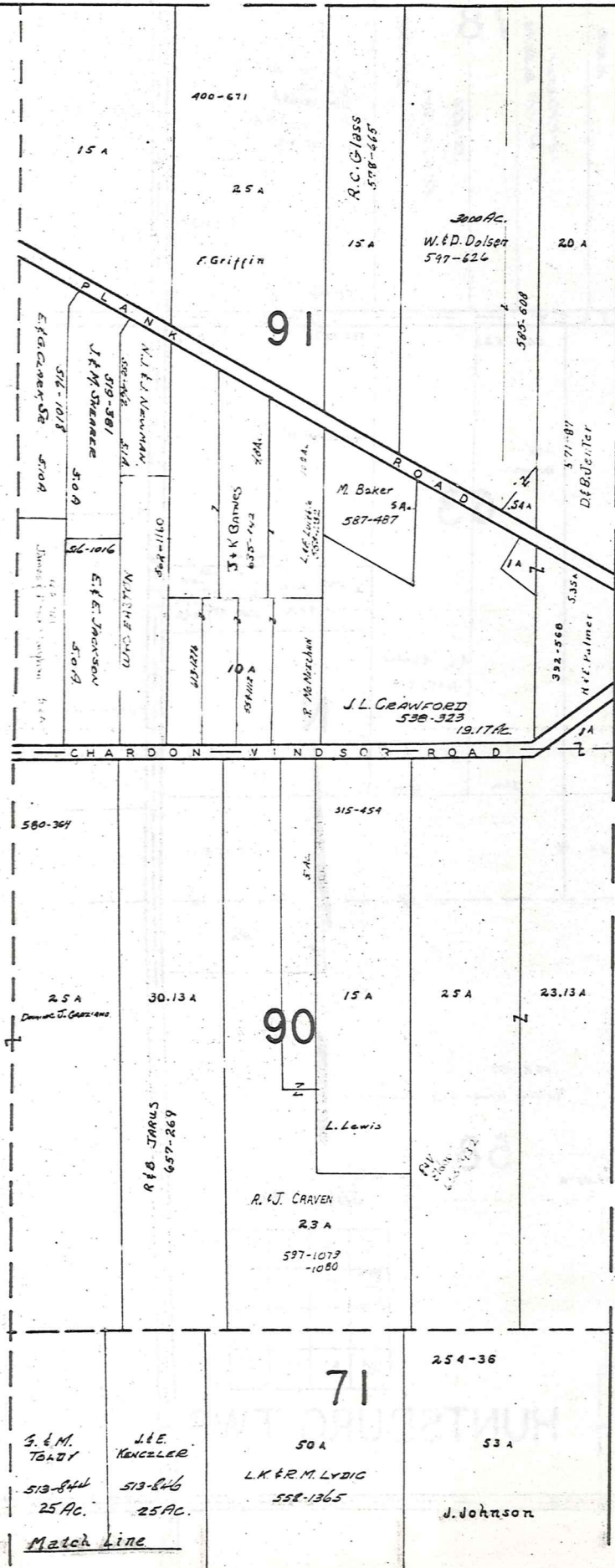
SCALE 1"=300'
JAN. 1, 1980



HUNTSBURG TWP.

MONTVILLE TWP.

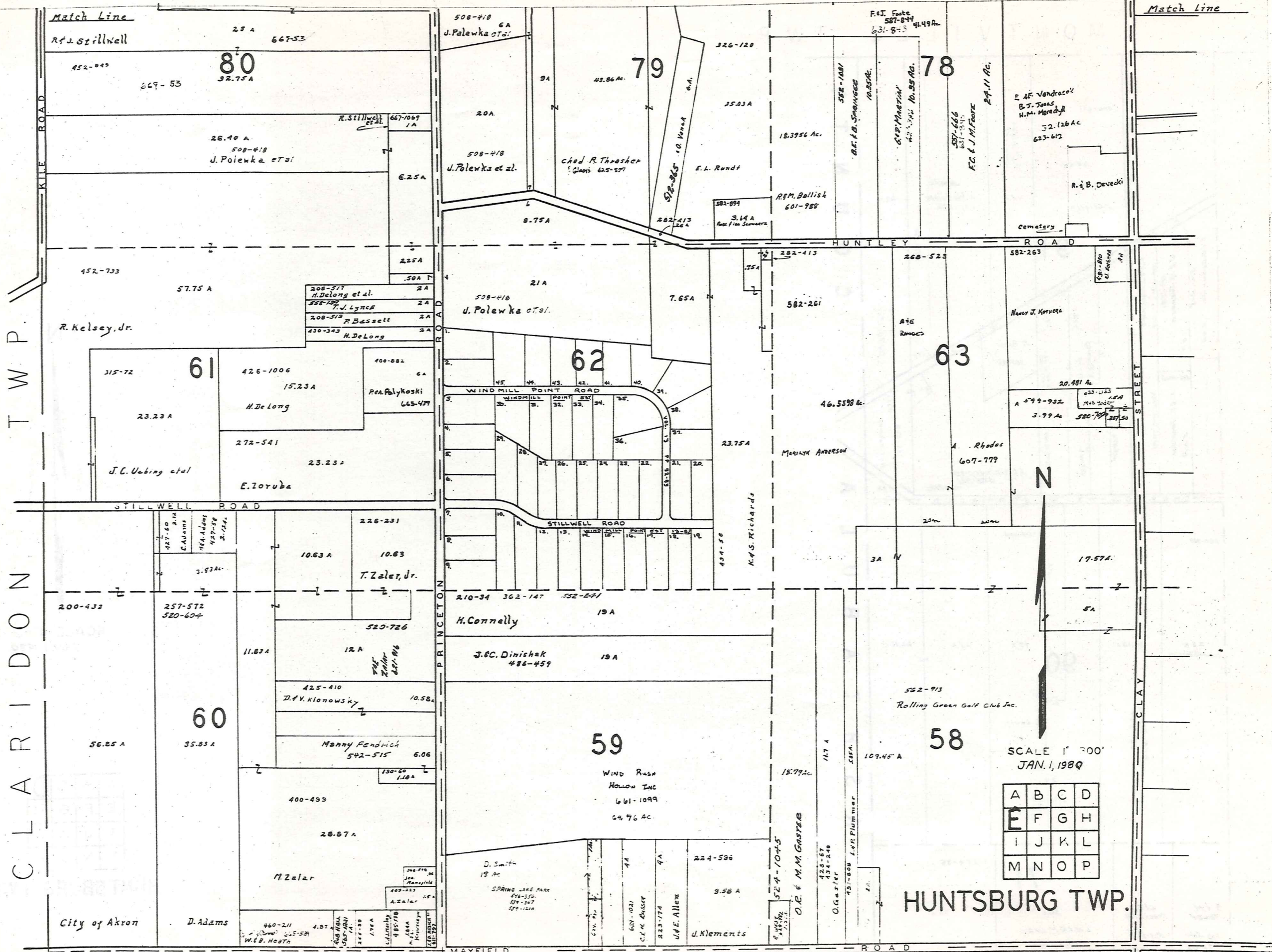
A S H T A B U L A C O U N T Y



SCALE 1"=300'
JAN. 1, 1980

A	B	C	D
E	F	G	H
I	J	K	L
M	N	O	P

HUNTSBURG TWP.

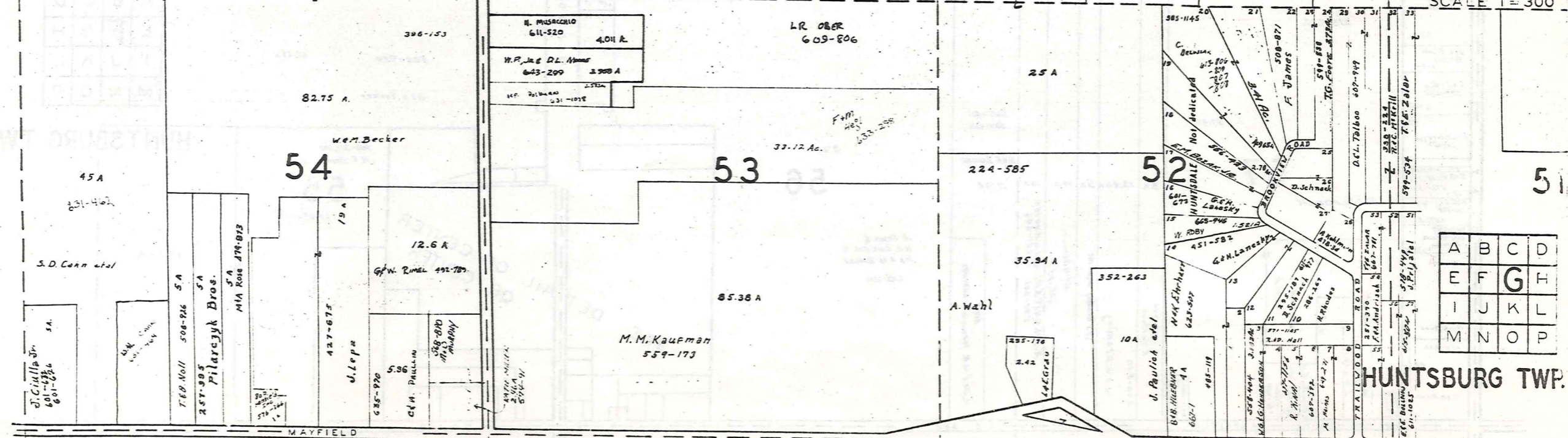
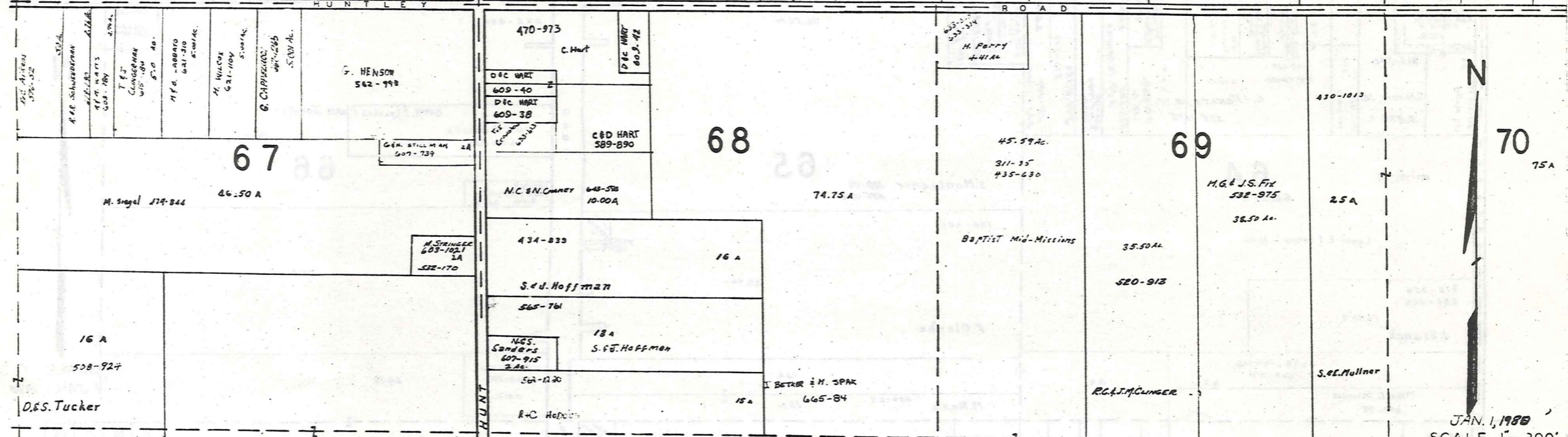
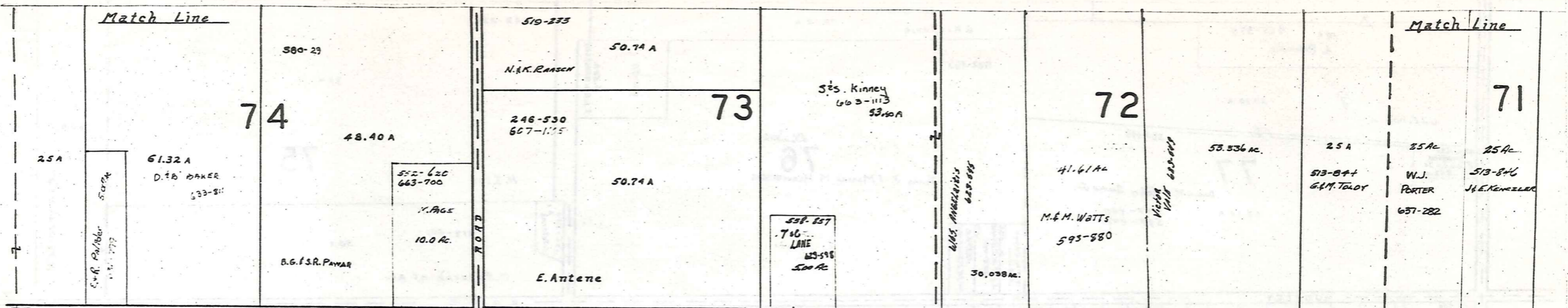


CLARIDON TWP.

SCALE 1" = 200'
JAN. 1, 1980

A	B	C	D
E	F	G	H
I	J	K	L
M	N	O	P

HUNTSBURG TWP.



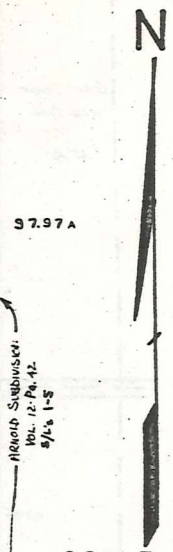
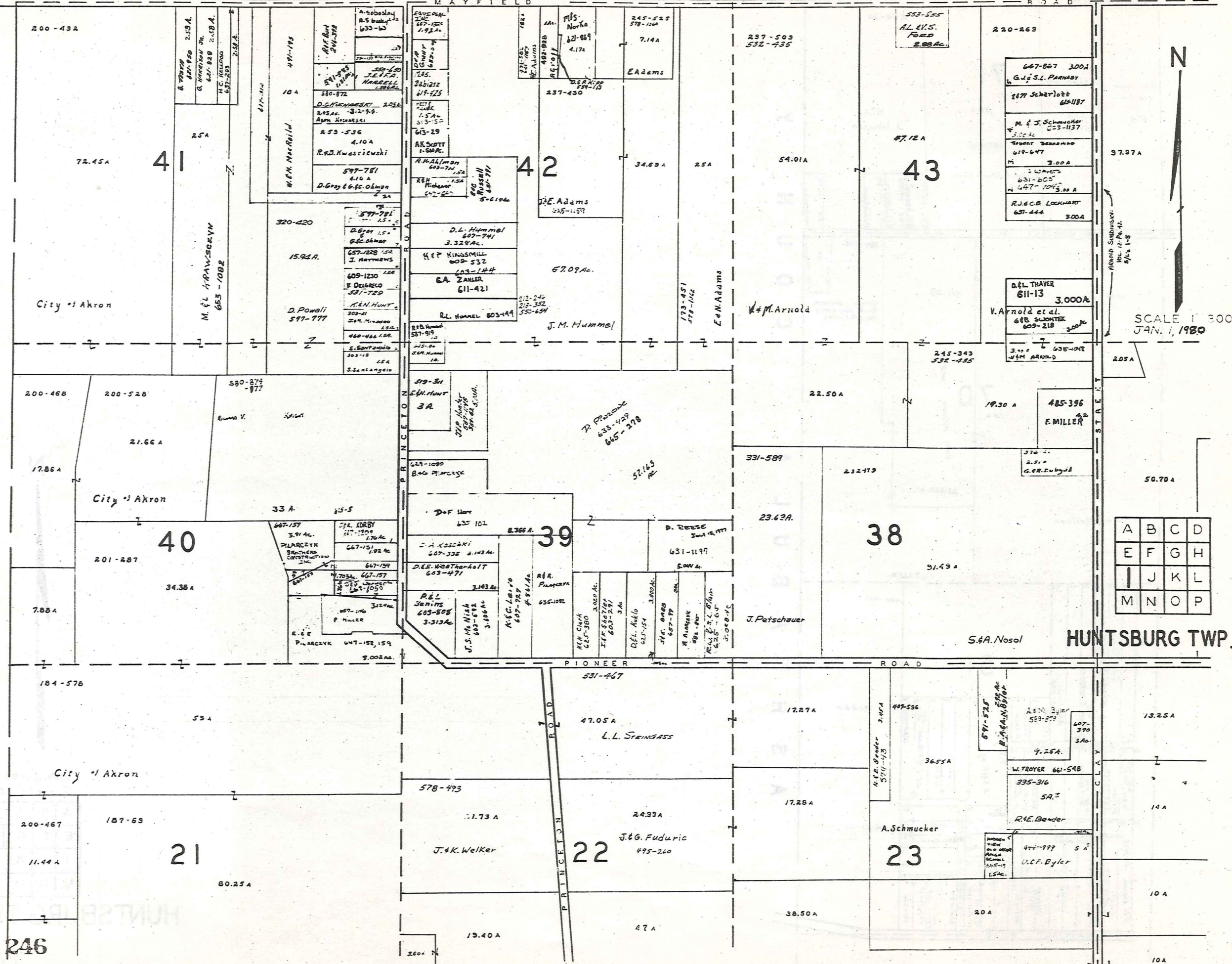
JAN. 1, 1980
SCALE 1" = 300'

A	B	C	D
E	F	G	H
I	J	K	L
M	N	O	P

HUNTSBURG TWP.

CLARIDON TOWNSHIP

MAYFIELD ROAD

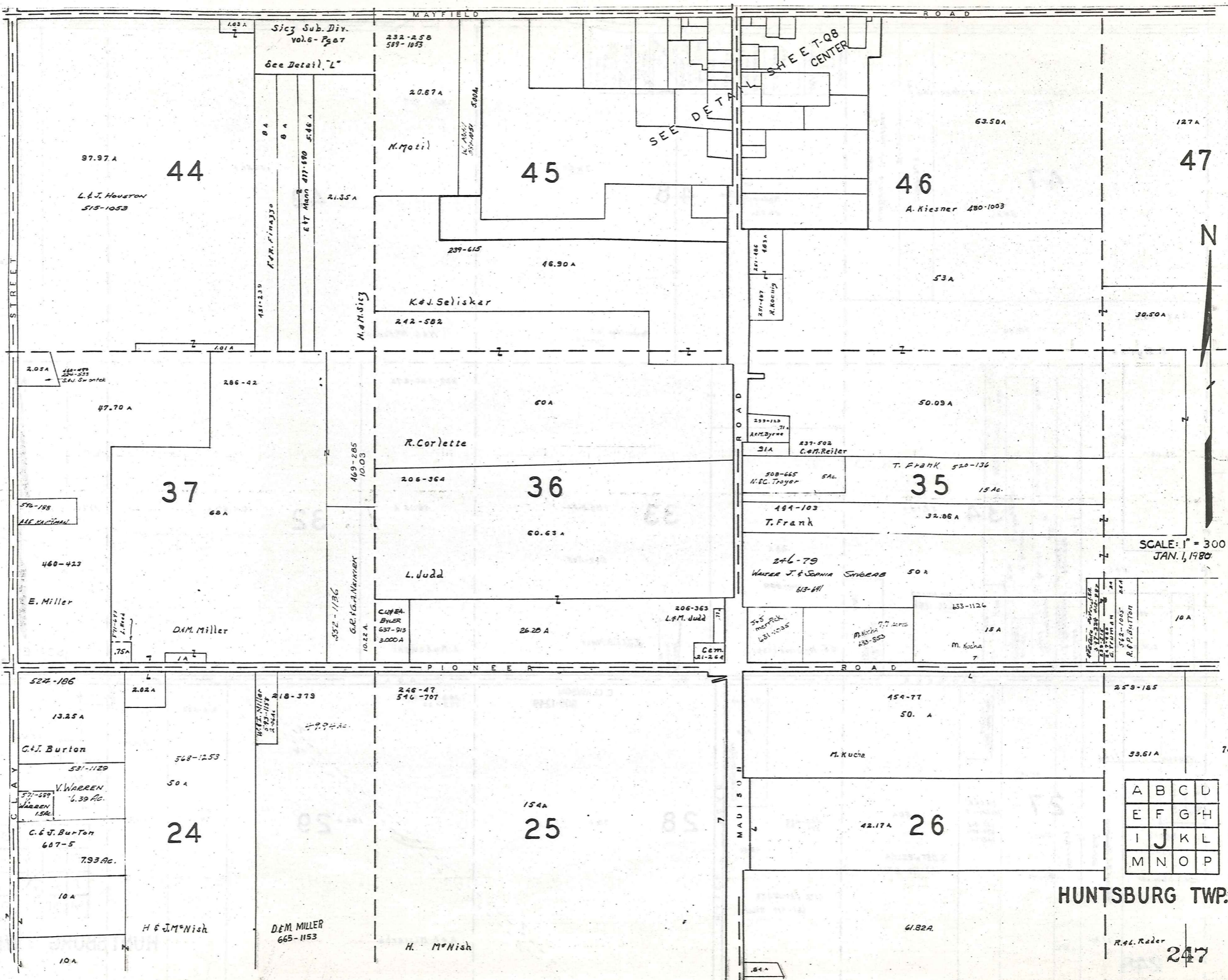


SCALE 1" = 300'
JAN. 1, 1930

A	B	C	D
E	F	G	H
I	J	K	L
M	N	O	P

HUNTSBURG TWP.

246



Sicg Sub. Div.
Vol. 6 - P. 87
See Detail "L"

97.97 A
L. & J. Houston
515-1053
44

232-258
589-1053
20.87 A
K. Motil
45

SEE DETAIL
SHEE T-Q8
CENTER

63.50 A
A. Kiesner 480-1003
46

127 A
47

2.05 A
460-470
224-533
250' SW corner
47.70 A
37

239-615
46.90 A
K. J. Selisker
242-582
36

247-486
247-487
R. KOCHING

53 A
50.09 A
237-133
A. M. Byrne
237-502
C. M. Reiter
31 A
500-665
H. G. Troyer
5 A
T. Frank 520-136
35
15 A

30.50 A

576-198
A. E. KATHMAN
460-423
E. Miller
D. M. Miller
37

60 A
R. Corlette
206-364
60.63 A
L. Judd
36

494-103
T. Frank
32.86 A
246-79
WALTER J. & SOPHIA SWIGAR
50 A
613-641
35

SCALE: 1" = 300'
JAN. 1, 1980

524-186
13.25 A
G. J. Burton
531-1129
V. WARREN
571-589
WARREN
15 A
C. & J. Burton
607-5
7.93 Ac.
10 A
10 A
H. & J. M. Nish
24

206-363
L. M. Judd
7.1 A
C. M. BYLER
637-913
3.000 A
26.25 A
36

508-665
H. G. Troyer
5 A
433-1126
15 A
M. Kucha
35

10 A
562-1005
R. P. BUTTON
24

548-1253
50 A
24

246-47
546-707
18-379
218-379
154 A
25

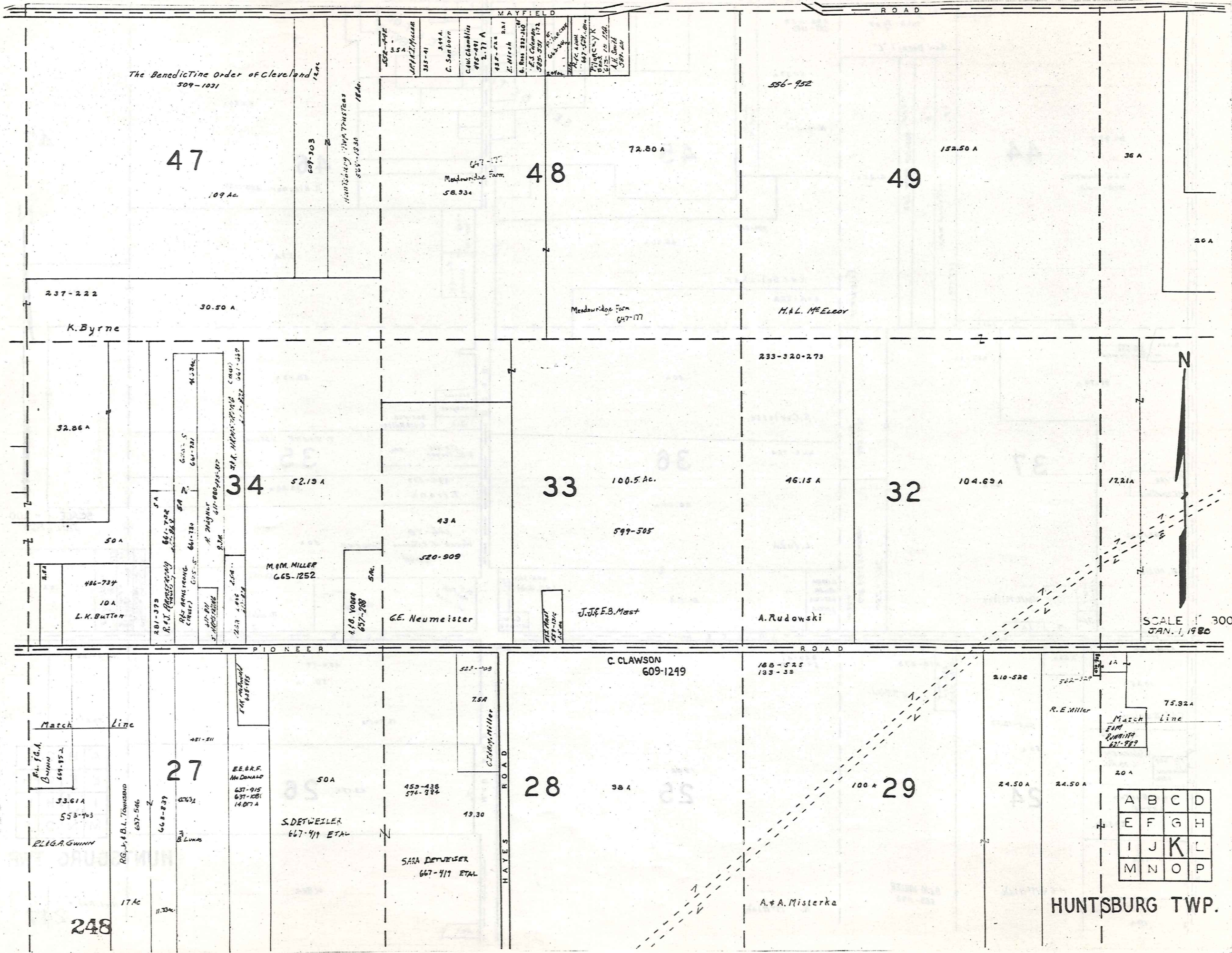
159-77
50 A
M. Kucha
42.17 A
26
61.82 A

259-185
33.61 A
26

A	B	C	D
E	F	G	H
I	J	K	L
M	N	O	P

HUNTSBURG TWP.

R. G. Rader
247



The Benedictine Order of Cleveland
509-1031

47

109 Ac.

609-303
Boundary Map Trustees
509-1030
1846

MAYFIELD ROAD
 509-1031
 509-1032
 509-1033
 509-1034
 509-1035
 509-1036
 509-1037
 509-1038
 509-1039
 509-1040
 509-1041
 509-1042
 509-1043
 509-1044
 509-1045
 509-1046
 509-1047
 509-1048
 509-1049
 509-1050

47-17
Meadowdale Farm
58.93 Ac.

48

72.80 A

556-952

49

152.50 A

36 A

26 A

237-222

30.50 A

K. Byrne

Meadowdale Farm
647-177

H.A.L. McEldoy

233-320-273

32.86 A

34

52.19 A

33

100.5 Ac.

32

104.69 A

17.21 A

486-734
10 A
L.K. Butten

281-373
R.A. Rappaport
661-702
R.L. Adams reorg.
Circuit
661-701
661-702
661-703
661-704
661-705
661-706
661-707
661-708
661-709
661-710
661-711
661-712
661-713
661-714
661-715
661-716
661-717
661-718
661-719
661-720
661-721
661-722
661-723
661-724
661-725
661-726
661-727
661-728
661-729
661-730
661-731
661-732
661-733
661-734
661-735
661-736
661-737
661-738
661-739
661-740
661-741
661-742
661-743
661-744
661-745
661-746
661-747
661-748
661-749
661-750
661-751
661-752
661-753
661-754
661-755
661-756
661-757
661-758
661-759
661-760
661-761
661-762
661-763
661-764
661-765
661-766
661-767
661-768
661-769
661-770
661-771
661-772
661-773
661-774
661-775
661-776
661-777
661-778
661-779
661-780
661-781
661-782
661-783
661-784
661-785
661-786
661-787
661-788
661-789
661-790
661-791
661-792
661-793
661-794
661-795
661-796
661-797
661-798
661-799
661-800
661-801
661-802
661-803
661-804
661-805
661-806
661-807
661-808
661-809
661-810
661-811
661-812
661-813
661-814
661-815
661-816
661-817
661-818
661-819
661-820
661-821
661-822
661-823
661-824
661-825
661-826
661-827
661-828
661-829
661-830
661-831
661-832
661-833
661-834
661-835
661-836
661-837
661-838
661-839
661-840
661-841
661-842
661-843
661-844
661-845
661-846
661-847
661-848
661-849
661-850
661-851
661-852
661-853
661-854
661-855
661-856
661-857
661-858
661-859
661-860
661-861
661-862
661-863
661-864
661-865
661-866
661-867
661-868
661-869
661-870
661-871
661-872
661-873
661-874
661-875
661-876
661-877
661-878
661-879
661-880
661-881
661-882
661-883
661-884
661-885
661-886
661-887
661-888
661-889
661-890
661-891
661-892
661-893
661-894
661-895
661-896
661-897
661-898
661-899
661-900

M.M. MILLER
665-1252

A.F. Young
657-288

G.E. Neumeister

J.J.F. Mast

J.J.F. Mast

A. Rudowski



SCALE 1" = 300'
JAN. 1, 1980

Match Line

R.A. G.A.
Bryant
681-952
33.61 A
553-703
R.L.G.A. Gwinn

R.G. & B.L. Townsend
637-546
17 Ac

27

481-511

E.E.R.F.
McDONALD
637-915
637-1081
14.07 A

S. DETWEILER
667-411 ETAL

SARA DETWEILER
667-411 ETAL

C. Tracy Miller

28

C. CLAWSON
609-1249

A.A. Misterka

29

210-526

R.E. Miller

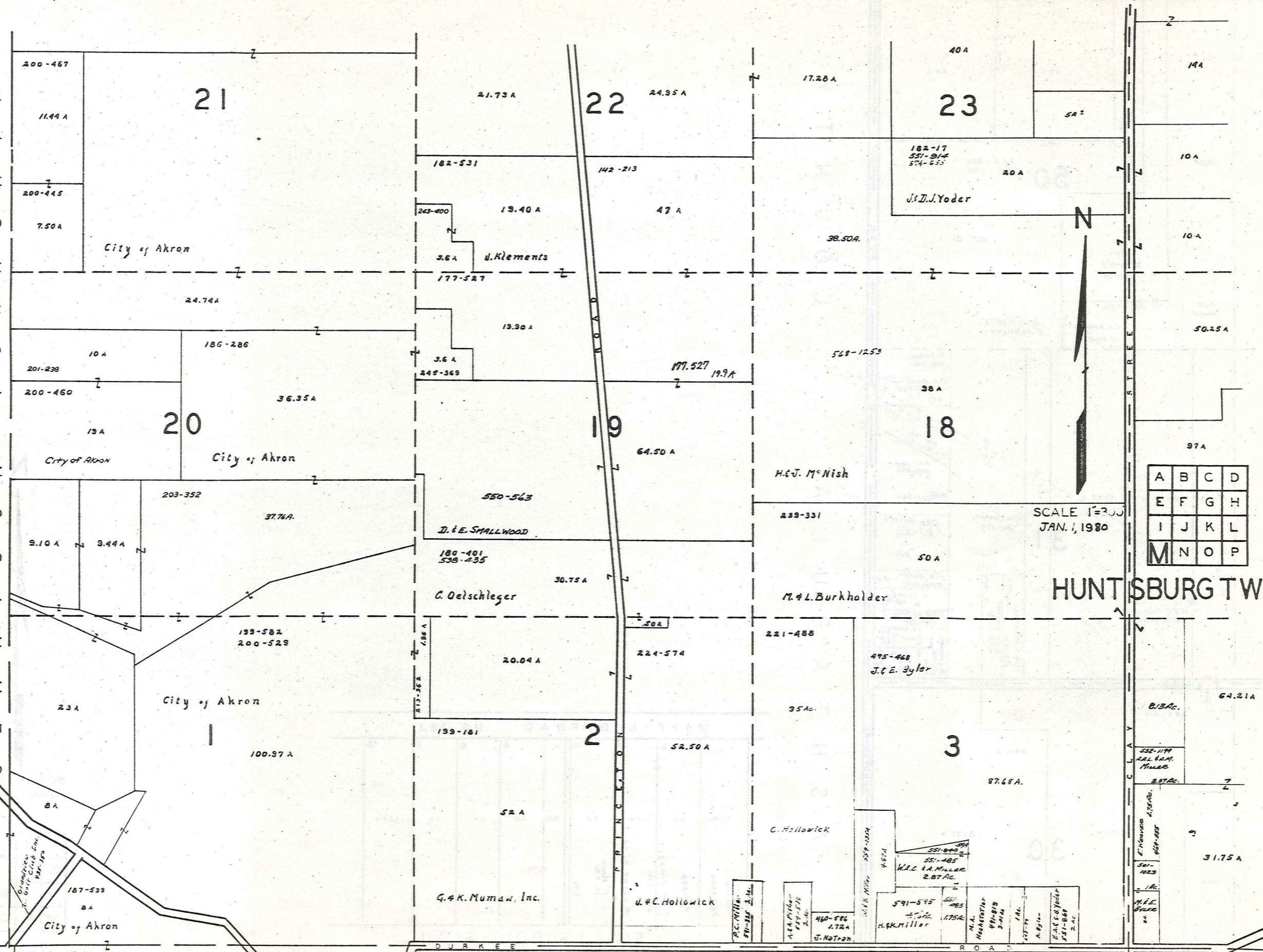
Match Line
E.M.
R. Miller
621-789

A	B	C	D
E	F	G	H
I	J	K	L
M	N	O	P

HUNTSBURG TWP.

C L A R I D O N T O W N S H I P

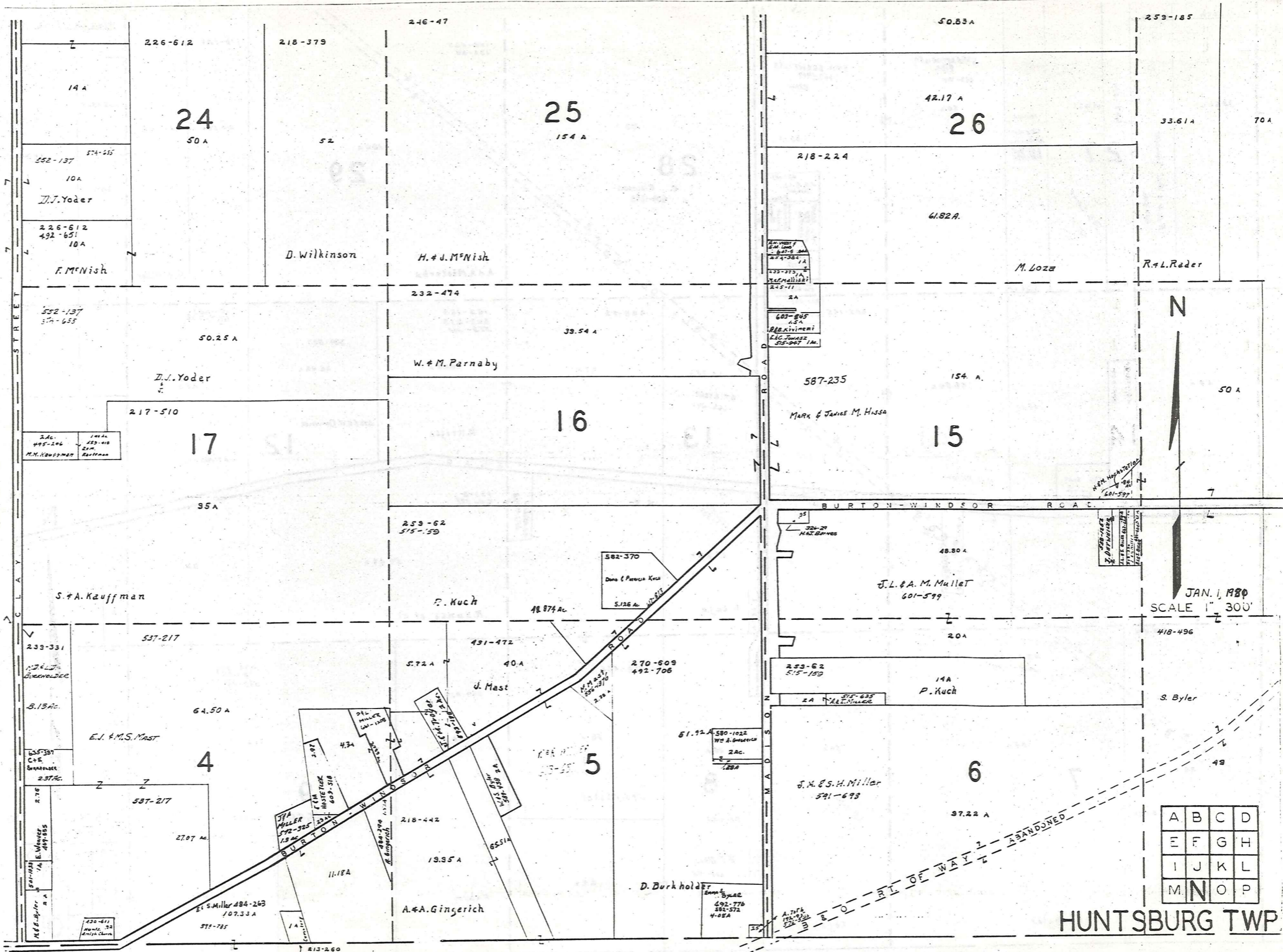
250 M I D D L E F I E L D T O W N S H I P



A	B	C	D
E	F	G	H
I	J	K	L
M	N	O	P

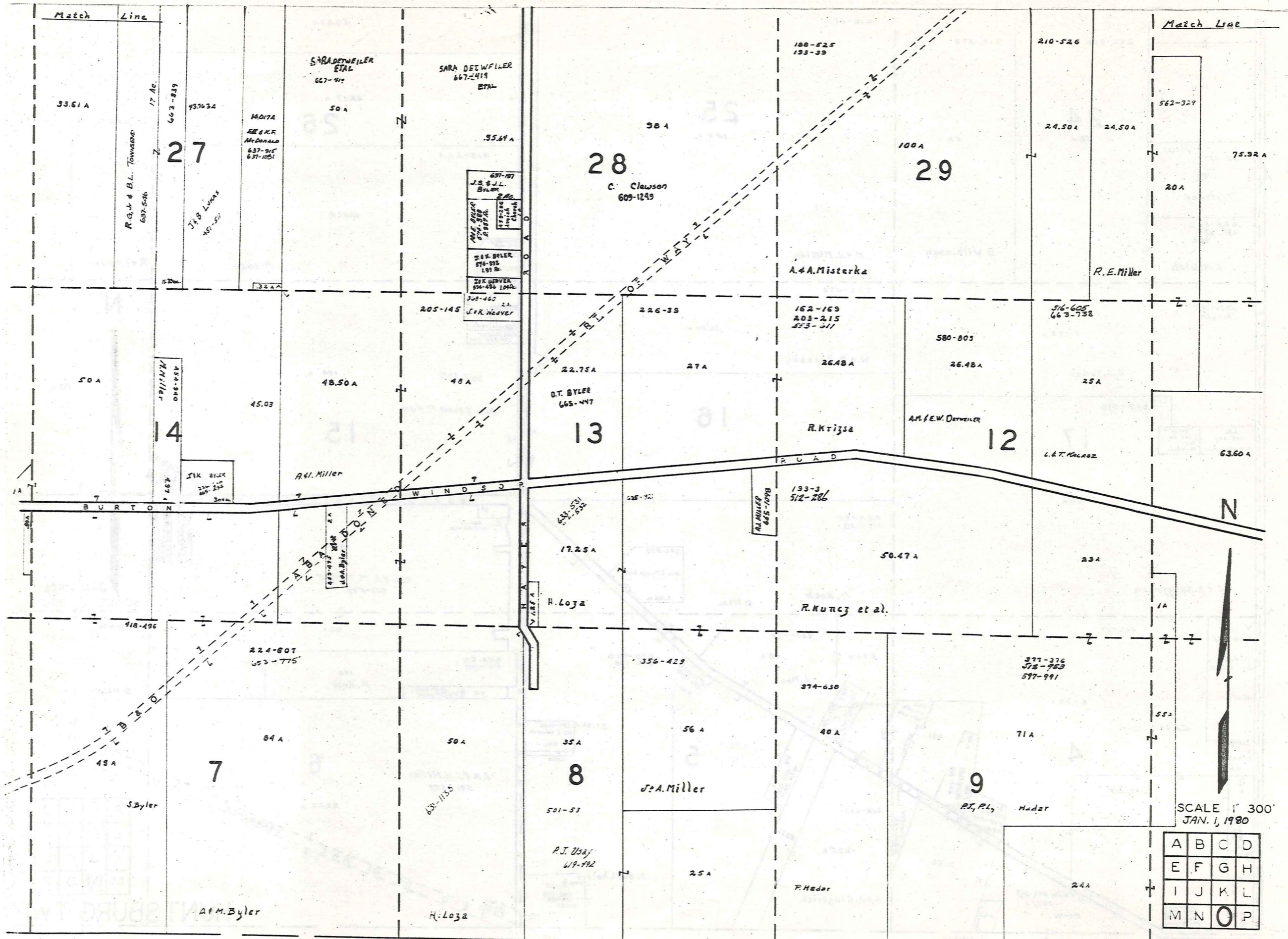
SCALE 1"=300'
JAN. 1, 1980

HUNT SBURG TWP



A	B	C	D
E	F	G	H
I	J	K	L
M	N	O	P

HUNTSBURG TWP



252 M I D D L E F I E L D T O W N S H I P H U N T S B U R G T W P

A	B	C	D
E	F	G	H
I	J	K	L
M	N	O	P

HUNTSBURG TR
CENTER

A S H T A B U L A
C O U N T Y

B U N D Y S B U R G

Match Line

282-332

282-311

20A

75.92 A

30

83.95 A

J. Fabian Jr. et al
59.95 Ac.

J. M. Gaines

631-886

M. R. Kaufman
629-1074
Gentry Pl. C. Inc.

SLY FOX M. Co. INC
625-117 5.001 A.

520-740

11

63.60 A

J. E. A. Clements

BURTON-WINDSOR ROAD

18.50 A

1A

524-663

THE GRAND RIVER
HARDWOOD Co.

5.50 A

57.50 A

10

81.50 A

S. Teliszcak et al
538-868
574-326

M I D D L E F I E L D T W P.



SCALE 1" = 300
JAN. 1, 1980

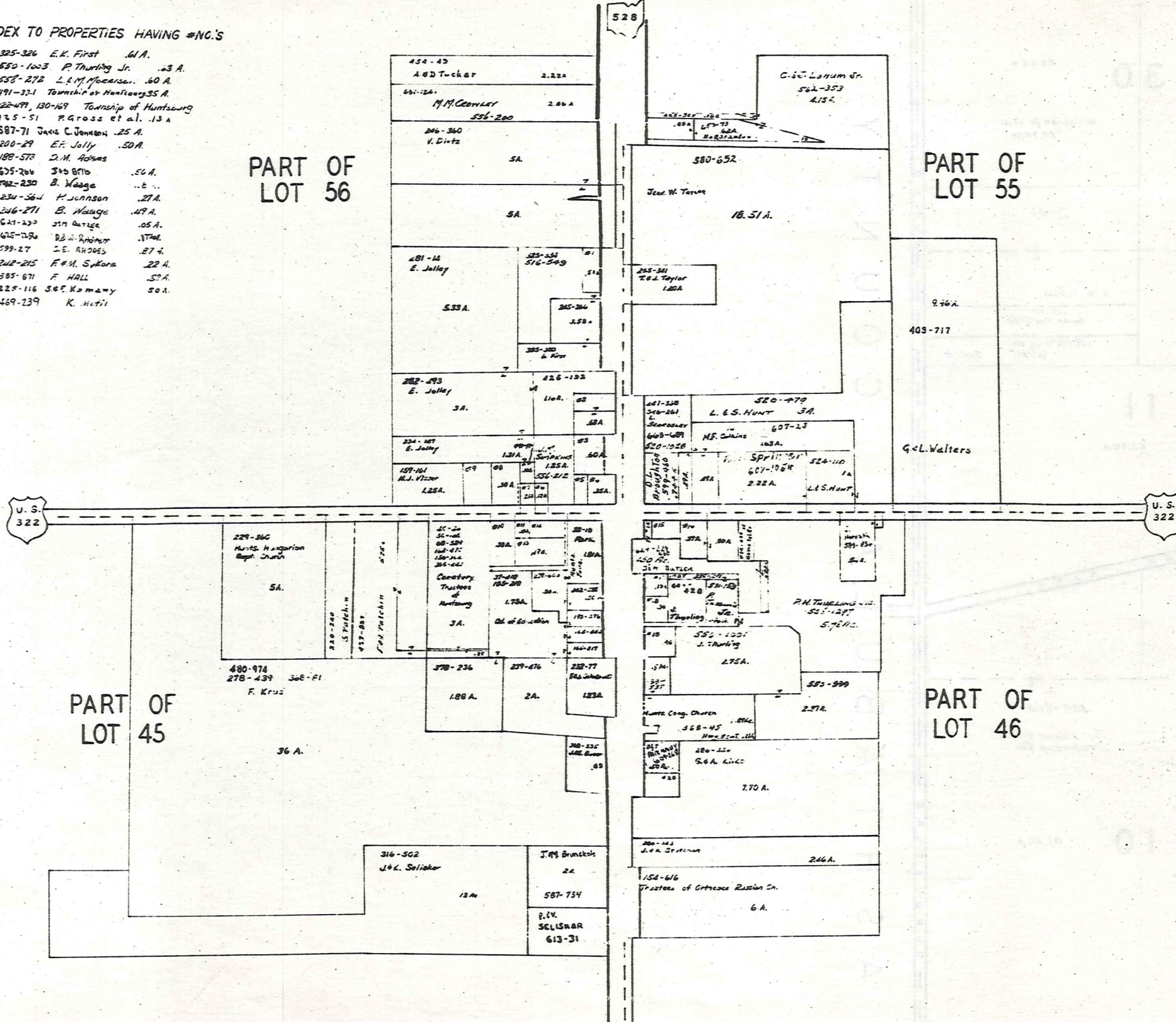
A	B	C	D
E	F	G	H
I	J	K	L
M	N	O	P

HUNTSBURG, TW
253

HUNTSBURG TP. CENTER

INDEX TO PROPERTIES HAVING #NO.'S

- #1 325-326 E.K. First .61 A.
- #2 550-1003 P. Thurling Jr. .63 A.
- #3 553-272 L.E.M. Moerser. .60 A.
- #4 491-331 Township of Huntsburg 35 A.
- #5 122-499, 130-169 Township of Huntsburg
- #6 425-51 F.G. Gross et al. .13 A.
- #7 587-71 James C. Johnson .25 A.
- #8 200-29 E.F. Jolly .50 A.
- #9 188-578 D.M. Adams
- #10 625-266 S.D. Billo .56 A.
- #11 572-250 B. Waage ..6 ...
- #12 234-564 H. Johnson .27 A.
- #13 246-271 B. Waage .47 A.
- #14 621-233 J.W. Outage .05 A.
- #15 625-256 D.E. Rhodes .17 A.
- #16 599-27 D.E. Rhodes .27 A.
- #17 242-215 F.M. Sikora .22 A.
- #18 585-671 F. HALL .52 A.
- #19 225-116 S.E. Kamany .50 A.
- #20 469-239 K. Hill



SCALE: 1 in. = 200'
JAN. 1, 1980

Explanation and Use Sheet for Geauga County, Ohio

SAMPLE (PARTIAL) COUNTY INDEX MAP



- Township Boundary
- Township Name
- Village Boundary
- Village Name
- Tract Lot Number
- Street Name
- Acreage
- Deed Book & Page
- Owners Name
- Denotes Continous Ownership

SAMPLE (PARTIAL) MAP PAGE



- Map Page Number
- Village Name
- Village Boundary
- Township Name

SAMPLE (PARTIAL) MUNICIPALITY INDEX MAP



- Street Name
- Village Name
- Township Name

USE OF THE MAP VOLUME

1. LOCATE THE GENERAL AREA OF INTEREST ON THE COUNTY INDEX MAP, ATLAS PAGE 'B', AND NOTE THE MUNICIPALITY NAME (TOWNSHIP OR VILLAGE).
2. REFER TO THE TABLE OF CONTENTS, ATLAS PAGE 'C', AND NOTE THE BEGINNING ATLAS PAGE NUMBER FOR THE MUNICIPALITY OF INTEREST.
3. TURN TO THE PAGE INDICATED. ON THIS PAGE WILL APPEAR AN INDEX MAP FOR THAT MUNICIPALITY.
4. LOCATE THE GENERAL AREA OF INTEREST AND NOTE THE MAP PAGE NUMBER. THIS MAY BE EITHER A LETTER OR A NUMBER.
5. MAP PAGES ARE IN ALPHABETICAL (OR NUMERICAL) SEQUENCE FOLLOWING THE MUNICIPALITY INDEX MAP. FOLLOW SEQUENCE TO THE MAP PAGE INDICATED.
6. LOCATE SPECIFIC PARCEL OF INTEREST AND NOTE THE DESIRED INFORMATION.

NOTE: ON SOME MAPS YOU MAY BE REFERRED TO A DETAIL SHEET SHOWING AN ENLARGEMENT OF THE AREA. THESE MAPS ARE FOUND AT THE END OF THE REGULAR MAP PAGES IN EACH MUNICIPALITY IN EITHER ALPHABETICAL OR NUMERICAL SEQUENCE.

NOTE: CHARDON VILLAGE HAS TITLE SHEETS. TO LOCATE OWNERS NAME, NOTE THE PARCEL NUMBER, REFER TO THE TITLE PAGE FOLLOWING THE MAP OF INTEREST, FOLLOW NUMERICAL SEQUENCE TO THE PARCEL NUMBER OF INTEREST AND NOTE THE DESIRED INFORMATION. IN ALL OTHER MUNICIPALITIES THE OWNERS NAME APPEARS ON THE MAP PAGE.

This book is the property of REAL ESTATE DATA, INC. and is distributed by REDI under a leasing arrangement requiring return to REDI upon termination of the lease. REDI reserves the right to reclaim this book if found in the possession of any firm or person where possession was obtained through any unauthorized source.